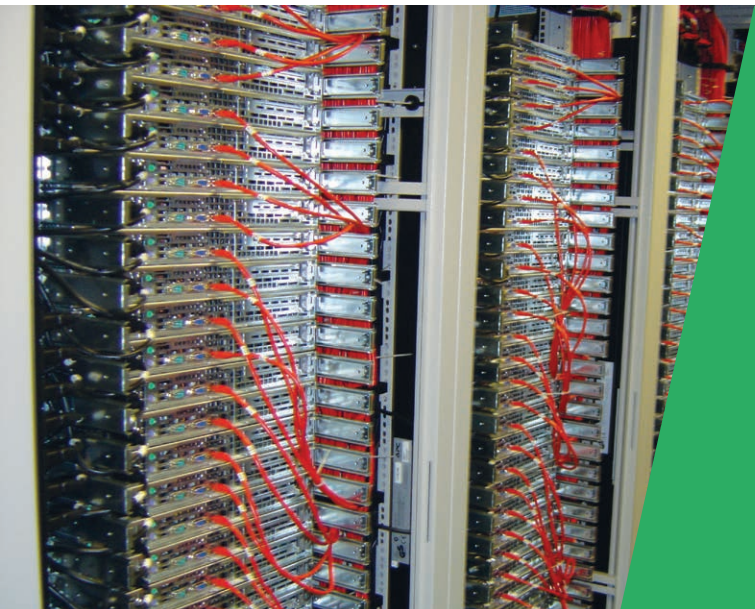


PAFSS[®]

PNEUMATICALLY ACTUATED FIRE SUPPRESSION SYSTEMS



Electrical Enclosures

Automatic Fixed Fire Extinguishing Systems for electrical enclosures

Issue 1

JacTone
CONFIDENCE *through* QUALITY

• U.K. MANUFACTURER • 

Electrical Enclosures



Why choose PAFSS

There are many situations where dealing with a fire at source will both minimise the damage of valuable assets by extinguishing the fire early and before it more fully develops, enabling a quicker recovery of operations.

Electrical Enclosures (Distribution, Control, Communication) can present a particular problem where faulty equipment and damaged wiring increase the risk of fire. The range of Jactone PAFSS can offer you the protection required, building on many years of experience and technical knowledge acquired in the fire industry.

Jactone PAFSS can be tailored to customer requirements, but the following common features apply:

- ✓ Simple to install and cost effective to maintain.
- ✓ Superbly engineered specialist valves and pressure vessel(s) containing an appropriately selected extinguishing agent.
- ✓ Linear heat and flame detection allows for an unlimited number of detection points.
- ✓ Flexible detection tubing can be located adjacent to the identified fire risk areas, resulting in fast action.
- ✓ Detection tube remains unaffected by dirt, dust, debris and oil.
- ✓ Failsafe by design principles and simplicity.
- ✓ Totally self-contained. No need for any external energy or power supply for detection or actuation and remaining operational during power interruption.
- ✓ Reliable discharge – Low pressure systems are set to 15 bar working pressure.
- ✓ All discharge pipework (Indirect systems) is stainless steel – vital in potentially corrosive environments.
- ✓ Reliable, vibration resistant push-fit detection tube fittings – for enhanced system leak tightness.

Unique Features Include:

- ✓ Innovative Technology
- ✓ Compact Valves
- ✓ Integrated Functions
 - Isolation Valves
 - Reed Switches
 - Valve position monitoring
 - Discharge confirmation
- ✓ System Monitoring
 - Low pressure
 - Discharge confirmation
- ✓ Reduced possibility of damage and leakage





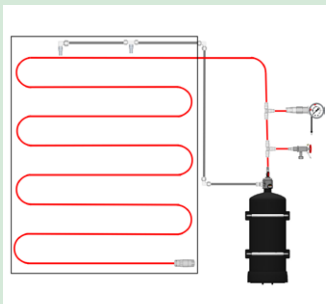
Electrical Enclosures

Principles of Operation

The heart of any Jactone PAFSS is the special detection tubing which acts as a linear heat and flame detector, allowing for an unlimited number of detection points and fast action. The pressurised tubing is completely flexible and tough enough to withstand the harshest of conditions. Upon flame or heat impingement caused by a fire, the tube ruptures at the hot spot and in the case of direct systems, discharges the extinguishant directly onto the hazard. In the case of Indirect systems, tube rupture opens the cylinder valve and releases the extinguishant through separate pipework and nozzles which are aiming at the hazard area. Both DIRECT and INDIRECT systems are available in both low pressure and high pressure format, depending on the most appropriate extinguishant selected.

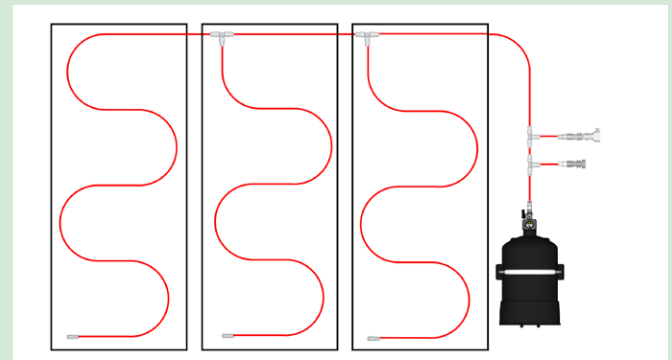


Indirect Systems

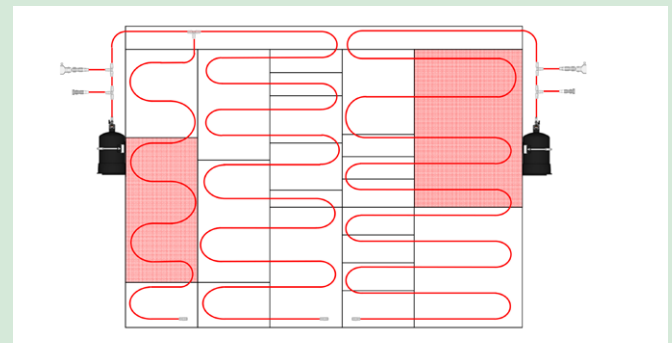


- ✓ Single or Multiple Compartments can be protected by one system.
- ✓ System size selection based on total volume of all compartments to be protected by one system.
- ✓ Manual Release or Solenoid Actuation available.

Direct Systems



- ✓ Multiple Compartments can be protected one system.



- ✓ System size selection based on largest compartment to be protected.

Customer Options

- ✓ Extinguishants – Clean Agent -Novec 1230 (15 Bar Low Pressure System) or CO2 (HP System)
- ✓ Manual release – You can opt for operator activation via means of an additional manual actuator valve. In all cases this supplements automatic tube detection and actuation.
- ✓ Pressure switches / Gauges to provide signals for system health and system discharge confirmation. (Note – CO2 systems can only be provided with system discharge confirmation via integral valve switch. System pressure monitoring for CO2 systems is not possible).


- ✓ Jactone Indirect PAFSS can also, if required, be integrated with traditional detection devices which, via suitable control panels, can operate a system solenoid valve and discharge the system. This can mean highly sensitive detection can lead to earlier discharge, sometimes of interest for sensitive electronic devices.



Jactone PAFSS complies with the requirements of the Pressure Equipment Directive (P.E.D. - 97/23/EC) and consequently carries the CE mark.

PAFSS®

PNEUMATICALLY ACTUATED FIRE SUPPRESSION SYSTEMS

- > Jactone PAFSS is manufactured in the UK 
- > PAFSS - On guard 24 hours a day, 365 days a year



Call us on
+44 (0)1902 357777



Email us at
pafss@jactone.com



Visit us at
www.jactone.com



Fax us at
+44 (0)1902 357711

JACTONE PRODUCTS LIMITED
Springvale Business Park
Springvale Avenue
Bilston
West Midlands
WV14 0QL
UNITED KINGDOM



Certificate No. FM 25049